

Visibility Delivered.



WATCHERSYSTEM

DESIGNED FOR SAFETY. DESIGNED FOR LIFE.

The IDENDEC SOLUTIONS' **WATCHERSYSTEM** provides highly reliable, complete and robust tracking solutions designed to save lives and track vehicles and valuable assets. Deployed in combination with IDENDEC SOLUTIONS' robust and intelligent long range RFID hardware, the **WATCHERSERIES** delivers real-time visibility in even the most challenging environments.

The primary function of the **WATCHERSYSTEM** is to improve safety for workers and visitors. It ensures a much more efficient handling of evacuation in emergency situations and increases the safety of day-to-day operations.





"...for the rescue service the system is of great help if an incident should occur. A sort of flight-recorder that shows the last location of personnel. For us, the system is a priceless tool. In the case of a fire or another incident, we can quickly obtain an overview of the situation, locate and identify the personnel that have not managed to get to a safe zone, and use this information for faster and more accurate rescue efforts..."

LKAB news bulletin 2004 (Iron Ore Mine)

WATCHERSERIES Software



Let **WATCHERSYSTEM** reflect your efforts and priorities within worker safety.

IDENDEC SOLUTIONS' relies on many years of experience with large scale customers deploying intrinsically safe and ATEX approved safety solutions for the Oil, Gas & Mining industry.

The main focus lies on improving safety for personnel and visitors while automated access control, the ability to send and receive alarms, integration of third party hardware such as CCTV systems and ventilation system are on only some of the additional benefits the **WATCHERSYSTEM** provides.

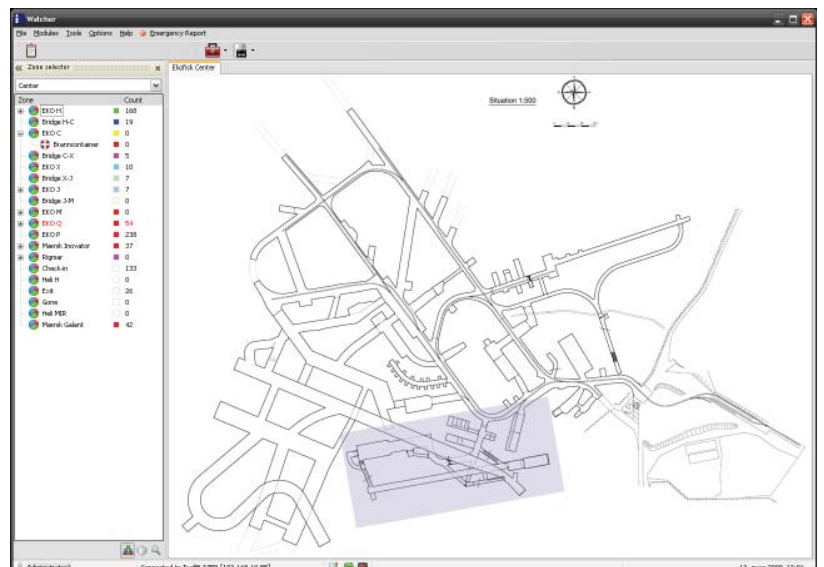
Used in combination with the routines and procedures of the facility, **WATCHERSYSTEM** will also improve the operational efficiency.

The **WATCHERSERIES** software visualizes the information gathered from the RFID hardware in a real-time overview and displays it on one or more maps. Any movable object can be tracked, be it personnel, vehicles or special equipment. This information can be used for anti-collision, trespassing, access control, confirmation of changed shifts, logistics and more. **WATCHERSYSTEM** is feature rich solution which can be customized to provide answers and solutions to a complex set of unique project requirements.

WATCHERSYSTEM includes open standard interfaces which enables a seamless integration with existing in-house or 3rd party software applications or databases.

Features:

- Search / Find
- Mustering
- Alarms / Alerts
- Logistics
- Location
- Fire & Ventilation
- 2D / 3D Map
- Anti Collision
- Access Control
- Mobile PDAs
- CCTV
- LED Displays



Intelligent Long Range RFID Hardware and Peripherals

IDENTEC SOLUTIONS intelligent long range (ILR) products are built to withstand dust, humidity, shock and extreme climate conditions such as heat or cold.



IDENTEC SOLUTIONS provides a wide range of readers (also known as interrogators). These can be mounted standalone, in enclosures/cabinets or as part of mobile handheld devices (e.g. PDAs).



Safety should not be an optional extra. We will ensure swift and seamless installation of your safety system.



A wide array of form factors enables a seamless integration into daily operations. Each tag has a unique ID number with the ability to customize the tags features. A centralized control unit can send alarms to tags, avoid collisions, and help locate valuable assets, as well as provide safety at work. An extensive battery life time of up to 12 years in combination with a read/write range of 500 meters are only some of the reasons why **IDENTEC SOLUTIONS'** products are considered best of the RFID industry.

IDENTEC SOLUTIONS provides directional, omnidirectional and specialized antennas to ensure an optimized and cost-efficient coverage of the zones of the facility. The compact and lightweight characteristics of our antennas enable fast and easy installation. The antennas are designed for use in industrial environments as well as in extreme temperatures and damp surroundings.

IDENTEC SOLUTIONS Oil, Gas & Mining division, follows the ISO 9001 standard. This standard defines the requirements for quality management systems, and provides assurance about the ability to deliver customer satisfaction in supplier-customer relationships.

The main purpose of the reader is to establish communication and enabling data exchange with the transponder. General or individual alarms can be sent from the watcher application to transponders.

IDENTEC SOLUTIONS provides a wide range of cabinets/enclosures that can be deployed in harsh environments. The cabinets are used for installation of core RFID hardware, and can be connected to fixed, wireless (WLAN or GPRS) or optical fibre based data networks. The cabinets are delivered pre-installed and pre-tested for rapid mounting and deployment.

Designed specifically for harsh environments, **IDENTEC SOLUTIONS'** products & services offer a holistic approach for the Oil, Gas & Mining industries. Compliant with the most rigorous requirements and having received all necessary certifications, the **WATCHERSYSTEM** is the right answer for personnel safety in areas such as tunnel constructions, coal mines, refineries and on offshore platforms.

Providing a turn-key system with minimal interruption of current operations, **IDENTEC SOLUTIONS** offers complete safety system integration including:

- Site requirement assessment and solution proposal.
- Site survey and joint development to find the most cost-effective and optimized solution to meet your requirements.
- Complete mounting and installation.
- Onsite training of key personnel.
- Continued support and Maintenance.
- Upgrades to the most recent **WATCHERSERIES** software versions.
- Continuous upgrade of new modules and functionalities.

Home to some of the industry's most knowledgeable active RFID specialist's, **IDENTEC SOLUTIONS** is committed to providing highest quality in customer support and professional services.



Visibility Delivered.



Visibility Delivered.



ABOUT IDENDEC SOLUTIONS

IDENDEC SOLUTIONS is the global leader in active wireless tracking solutions. A commitment to developing ground-breaking, industry-specific tracking solutions featuring proprietary patented technology has placed IDENDEC SOLUTIONS in the international forefront as a technology provider for innovation and as a complete solution provider in the automotive, oil, gas and mining industries. Utilized by the world's leading organizations and system integrators, IDENDEC SOLUTIONS' award-winning technology portfolio offers robust, highly effective tracking solutions that manage critical process and optimize supply chain flow.

Privately held since 1999, IDENDEC SOLUTIONS has provided asset management solutions and support to a variety of organizations, including an impressive roster of Fortune 500 clients such as Volkswagen, Audi, Deutsche Post and General Electric. Headquartered in Lustenau, Austria, the company's North American headquarters are located in Dallas, Texas, with customer service centers in Hong Kong, Germany, Australia and Norway. For more information, please visit www.identecsolutions.com.

IDENDEC SOLUTIONS AG
Millennium Park 2
A-6890 Lustenau
Austria
Tel. +43 5577 87387 0
Fax +49 5577 87387 15
info@identecsolutions.at

IDENDEC SOLUTIONS
Deutschland GmbH
Hertzstrasse 10
69469 Weinheim
Germany
Tel.: +49 (0)6201 9957-0
Fax: +49 (0)6201 9957-99

IDENDEC SOLUTIONS, Inc.
Liberty Plaza II, Suite 375
5057 Keller Springs Rd,
Addison, Texas 75001
USA
Tel: (972) 535 4144
Fax: (469) 424-0404

IDENDEC SOLUTIONS
Asia Limited
12/F, Unit 1202, ING Tower
308-320, Des Voeux Road C.
Hong Kong
Tel. (852) 28051816
Fax (852) 28051814

IDENDEC SOLUTIONS AS
Skarpengland
4715 ØVREBØ
Norway
Tel. +47 38 13 91 53
Fax +47 38 13 96 91

IDENDEC SOLUTIONS Australia
Suite 4/125 Terralong Street,
Kiama, NSW 2533
Australia
Tel.: +61 2 4232 4999
Fax: +61 2 4232 4888

www.identecsolutions.com